



## Charles Edward Wyche

August 8, 1937 - November 22, 2015

Charles Edward Wyche born August 8, 1937 to John Wyche and Pinkie Turner Wyche.

Charles was raised in Griffin, Georgia and later moved to Chicago, Illinois to be with other family members for a better life. He was a hard worker and a kind man who loved basketball, football and baseball.

In 1970, Charles met Rose Marie Woods, a divorced mother of six children, all of whom loved Charles and he loved them. In 1974, Charles and Rose had a son, though they never married, they were together fourteen years and were the best of friends. Charles was a loving grandfather and his grandkids and great grandkids called him "Grandpa", and he loved to be with them.

Charles worked for James Meat Company and then Fleischmann Malting Company where he worked for 25 years before he retired in January 2003.

On November 22, 2015, Charles entered eternity surrounded by his loving family. He was preceded in death by his parents, John Wyche and Pinkie Turner Wyche; his brother, Homer Turner; one son, Micheal Woods; and one daughter, Angela Peterson.

Charles leaves to cherish his loving memories, his sister, Georgia Ann

Moreland; two brothers, Robert Wyche and John Wyche Jr.; two sons, Frederick Woods and Arthur Woods; three daughters, Tanya Woods, Lisa Woods and Michele Woods; grandchildren and great grandchildren; the mother of his children, Rose Marie Woods; and a host of nieces, nephews, cousins and friends.

We want to thank God for leaving us all with warm memories of Charles. To God be the glory for the things he has done.

# Previous Events

## Visitation

DEC 4. 10:00 AM - 11:00 AM (CT)

McCullough Funeral & Cremation Services  
851 East 75th Street  
Chicago, IL 60619  
(773) 488-8900  
info@mcculloughfuneralservices.com

## Service

DEC 4. 11:00 AM (CT)

McCullough Funeral & Cremation Services  
851 East 75th Street  
Chicago, IL 60619  
(773) 488-8900  
info@mcculloughfuneralservices.com

# Tribute Wall



“ *Charles Edward Wyche*

October 04, 2023 at 06:11 PM

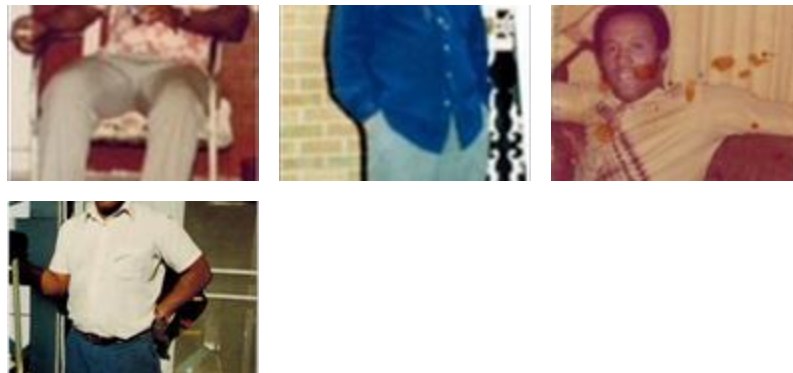


“ *Comforting thoughts for the family of Charles E. Wyche, (James 4:8) Draw close to God, and he will draw close to you.*

EL - December 16, 2015 at 08:04 AM



“ *4 files added to the album Memories Album*



McCullough Funeral & Cremation Services - December 13, 2015 at 05:43 AM