



Mrs. Edna Doris Burl

August 17, 1934 - February 2, 2023

Edna Doris Burl was born August 17, 1934, to Nellie May and Edgar Russell.

She attended Bramwell Elementary School and graduated from Bramwell High School. She was a majorette, she loved music, and she loved to dance.

On February 20, 1954, Edna married Charles Edward Burl. They were blessed with 8 children. Edna was a loving mother who prided herself on caring for her children, both physically and spiritually. The highlight of the week were family dinners.

Edna's love of God led her to study the Bible with Jehovah's Witnesses. After making the truth her own she dedicated her life to Jehovah through water baptism on June 19, 1974. Edna was always present at the meetings, whether in person or on Zoom. She would talk to neighbors, delivery people, or repair people, she never missed an opportunity to speak about her God Jehovah. The monthly broadcast was her favorite, faithfully every first Monday of the month she would watch and encourage all around her to watch especially her children and grandchildren. She would watch the broadcast over and over so she could glean every ounce of spiritual food it offered.

Her love and fine works motivated her to extend hospitality to the entire congregation. Having the friends over for a good meal and encouraging

association filled her heart with joy.

Edna Doris Burl fell asleep in death on February 2, 2023. Her family looks forward to welcoming her back to a paradise earth where no resident will say, "I am sick." She was preceded in death by her parents Nellie Mae and Edgar Russell, 1 daughter Phileshea, 2 brothers Roland and Everette, 2 sisters Ida Mae and Odessa, and 1 grandchild Tawanda.

Edna leaves to cherish her memories, her 8 children: 3 sons Randy, Robert (Katrina), and Danny and 4 daughters Sandra (Richard), Joyce (Glenn), Vonda (Yardley) and Tan (Anthony); 3 brothers Edgar, James and Ronnie, 17 grandchildren, 18 great grandchildren, and a host of nephews, nieces, relatives and close friends.

Previous Events

Service

FEB 11. 2:00 PM (CT)

Kingdom Hall of Jehovah's Witnesses (Plainfield)
15827 South Frederick Avenue
Plainfield, IL

Tribute Wall



“ *McCullough Funeral & Cremation Services created a Tribute Video in memory of Mrs. Edna Doris Burl*



McCullough Funeral & Cremation Services - February 10, 2023 at 11:32 AM

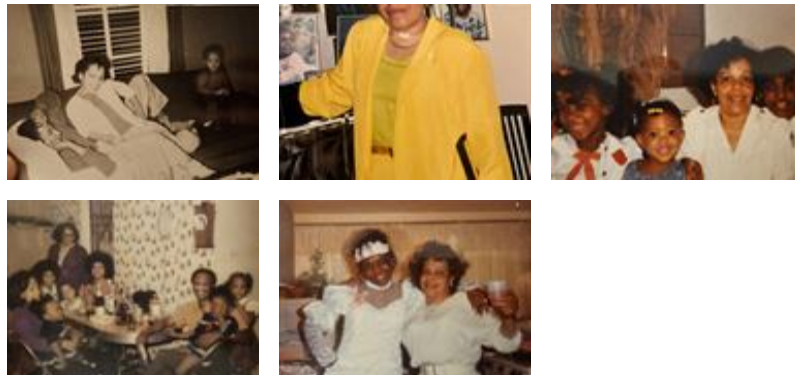


“ *Mrs. Edna Doris Burl*

October 04, 2023 at 06:11 PM



“ *55 files added to the album Life Tributes*



McCullough Funeral & Cremation Services - February 10, 2023 at 11:31 AM